



**Health Plus  
General Trading LLC**

**Product Brochure**

# HealthPlus



## From Poultry Range

**CHICKEN LEG S/L 3 CUT**

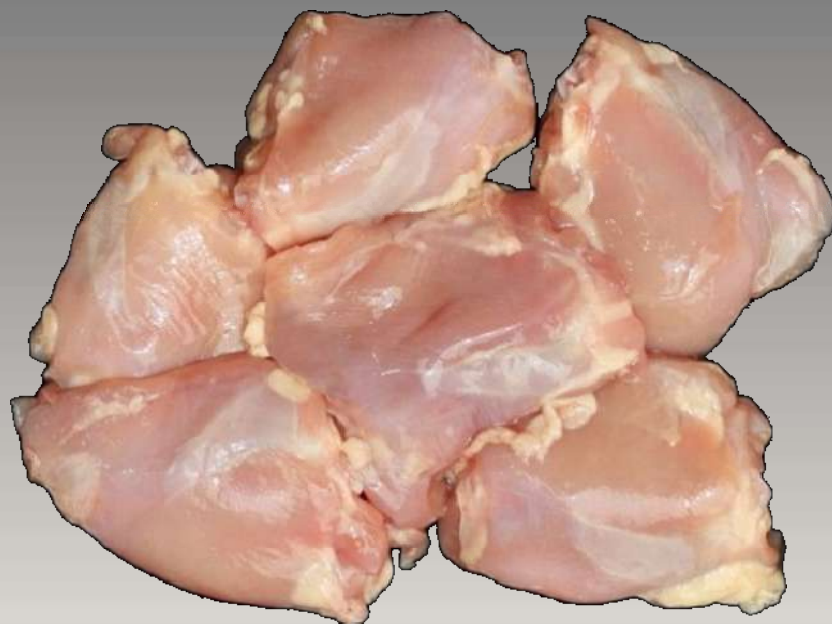


**CHICKEN LEG KEBAB,**



**Shelf Life: 3 days including Production & Expiry date**

**CHICKEN CURRY CUT**



**CHICKEN LEG 3 CUT S/ON**



**Shelf Life: 3 days including Production & Expiry date**

**PRODUCT NAME: CHICKEN KEBAB 800G – IRANIAN CUT**



**Shelf Life: 3 days including Production & Expiry date**

**CHICKEN TIKKA – 45 TO 60 GRAMS PER PIECE.**



**Shelf Life: 3 days including Production & Expiry date**

**CHICKEN BREAST – BONELESS SKINLESS**



**Shelf Life: 3 days including Production & Expiry date**

**CHICKEN BREAST BONELESS SKIN-ON –  
140 GRAMS PER PIECE APPROX.**



**Shelf Life: 3 days including Production & Expiry date**

**FRESH CHICKEN SUPREME – BONE-IN, SKIN-ON**



**Shelf Life: 3 days including Production & Expiry date**

**CHICKEN BREAST B/L S/L - TENDERIZED**



**Shelf Life: 3 days including Production & Expiry date**

**CHICKEN WHOLE LEG BONE-IN SKINLESS –  
WITH SLITS, NO FAT.**



**Shelf Life: 3 days including Production & Expiry date**

**CHICKEN TANDOORI – WITH SLITS, NO FAT.**



**Shelf Life: 3 days including Production & Expiry date**

## FRESH CHICKEN THIGH CUBES

18-20 grams per piece



8-10 grams per piece



Shelf Life: 3 days including Production & Expiry date

**CHILLED CHICKEN SASHLICK – 18 TO 25  
GRAMS PER PIECE**



**Shelf Life: 3 days including Production & Expiry date**

**CHICKEN WHOLE SKINLESS 900 GRAMS  
700 TO 750 GRAMS AFTER PROCESSING.**



**Shelf Life: 3 days including Production & Expiry date**

**CHILLED BURGERS**

**CHICKEN BURGER –  
200/160/120 GRAMS**



**FRESH CHICKEN MINCE – 5MM**



**Shelf Life: 3 days including Production & Expiry date**

HealthPlus



HealthPlus

**From Marinated Poultry  
Range**

**CHICKEN  
POPCORN**



**BREADED  
CHICKEN  
FINGERS**



**CHICKEN CORDON  
BLUE**



**Shelf Life: 3 days including Production & Expiry date**

***CHICKEN MEAT BALLS***



***CHICKEN ESCALOOPS –  
BREADED***



***CHICKEN NUGGETS***

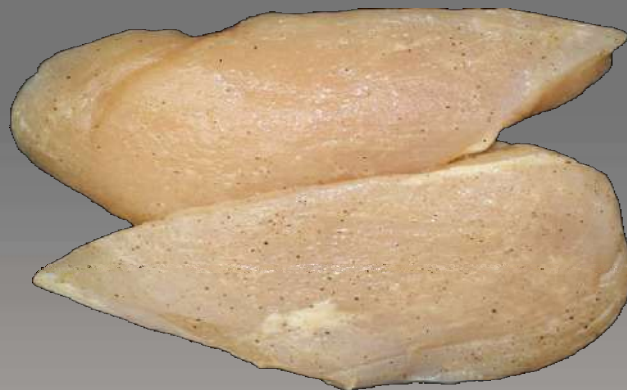


**Shelf Life: 3 days including Production & Expiry date**

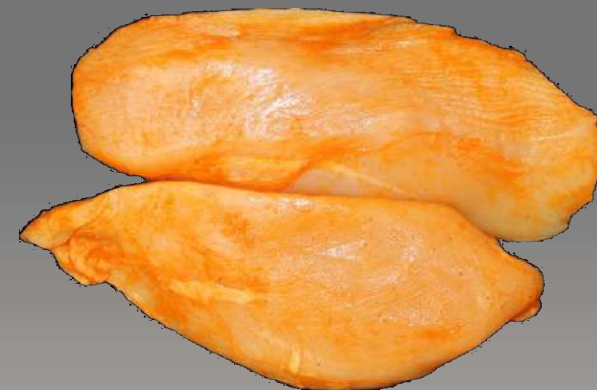
**GARLIC BUTTER**



**SHISH TA WOOK**



**SWEET & SOUR**



**MEXICAN CHILLY**



**CHINESE**

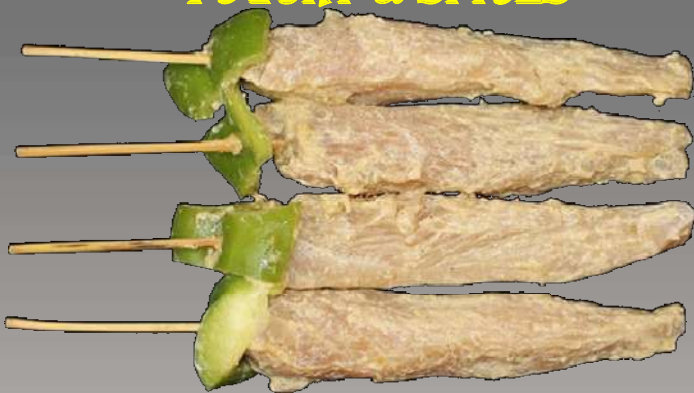


**LEMON PEPPER**



**CHICKEN ESCALOOPS**

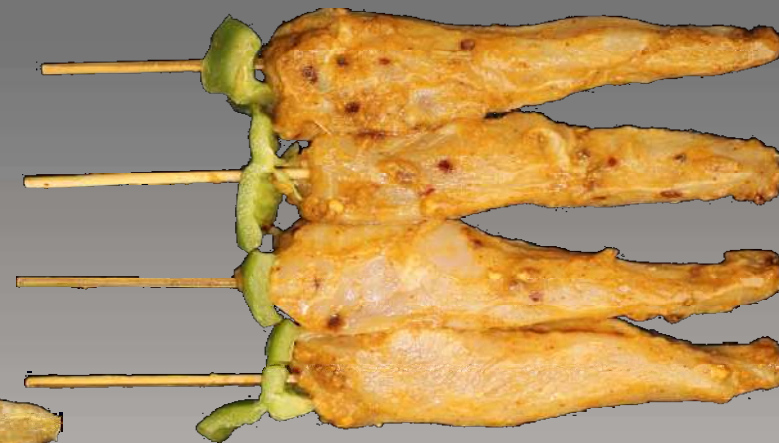
**CHICKEN SATAY -  
YOGURT & SPICES**



**CHICKEN SATAY -  
CREAMY GARLIC**

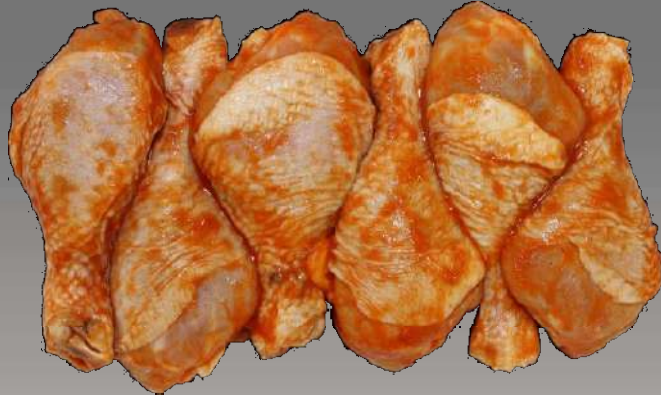


**CHICKEN SATAY -  
CHILLY LEMON**



**Shelf Life: 3 days including Production & Expiry date**

***SWEET & SOUR***



***LEMON PEPPER***



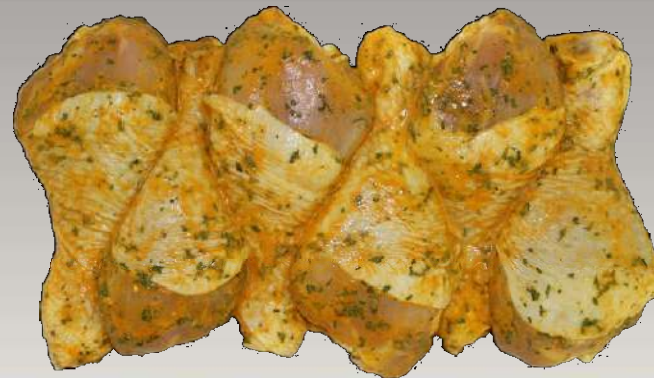
***MEXICAN CHILLY***



***CHINESE***



***GARLIC BUTTER***

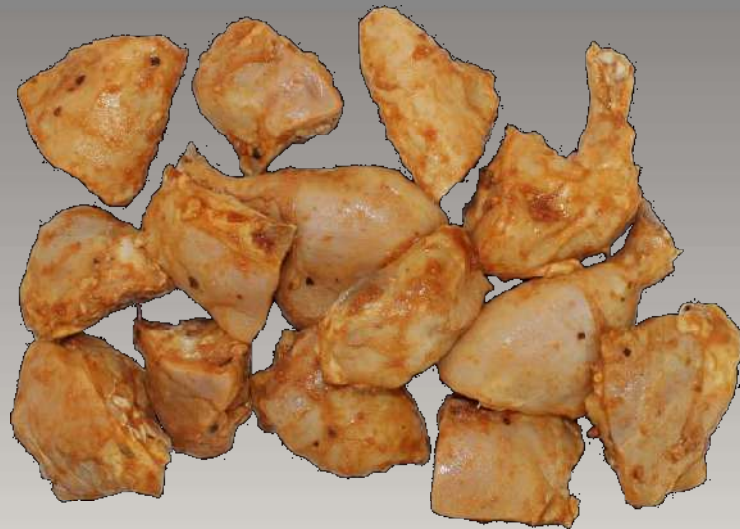


***SHISH TA'WOOK***

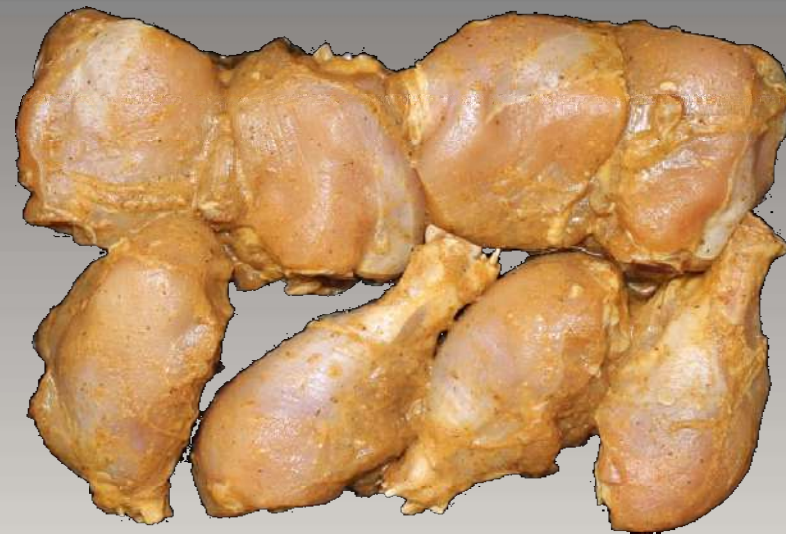


***CHICKEN DRUMSTICK***

***CHICKEN CALDERETA***

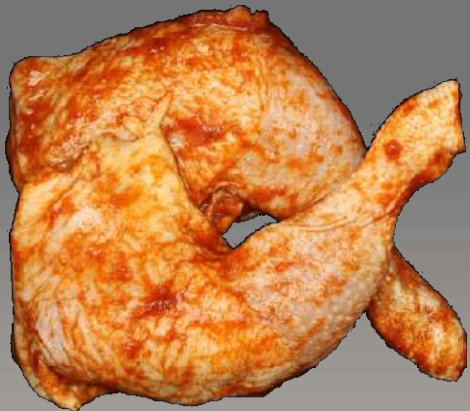


***CHICKEN ADOBO***

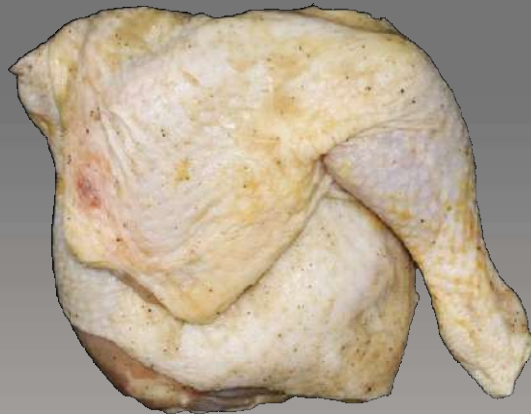


**Shelf Life: 3 days including Production & Expiry date**

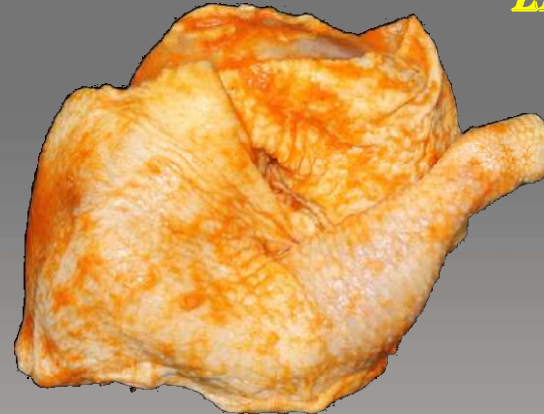
**MEXICAN CHILLY**



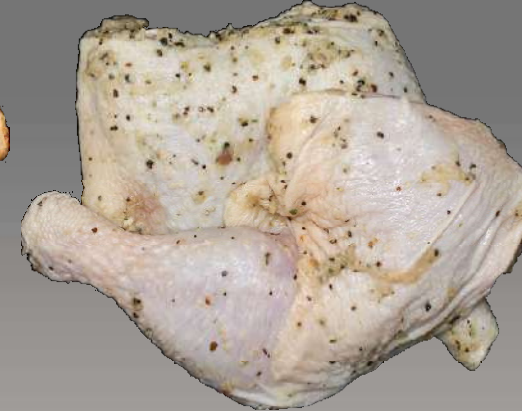
**SHISH TAWOOK**



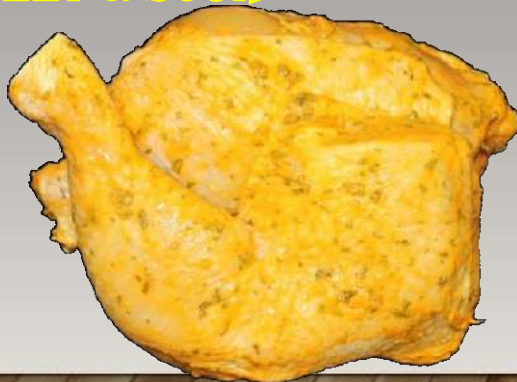
**GARLIC BUTTER**



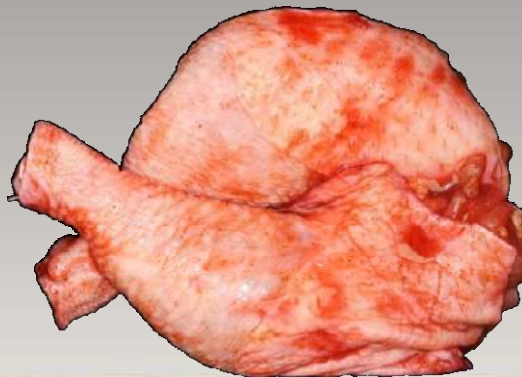
**LEMON PEPPER**



**SWEET & SOUR**



**CHINESE**



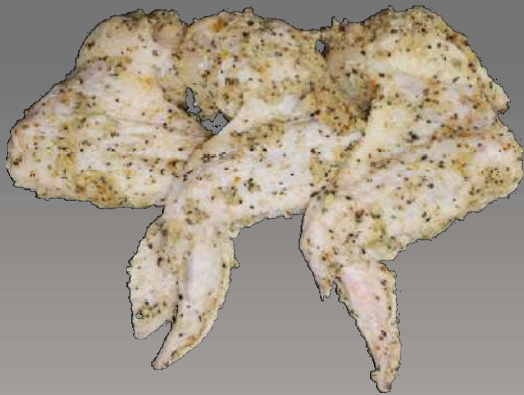
**TANDOORI S/L**



**CHICKEN LEG**



**LEMON PEPPER**



**TIKKA MASALA**



**GARLIC BUTTER**



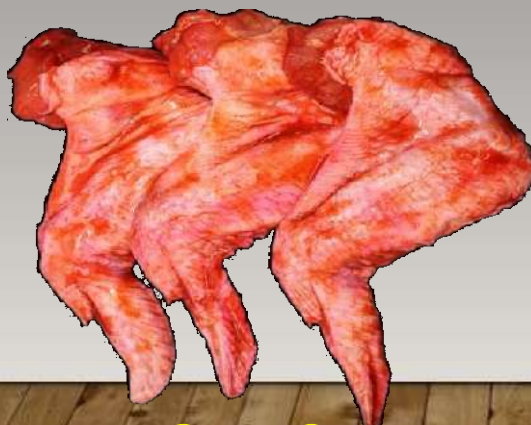
**MEXICAN CHILLY**



**SWEET & SOUR**



**CHINESE**



**BBQ**



**SHISH TAWOOK**

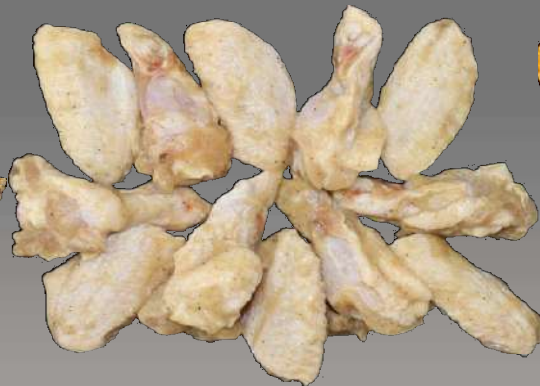


**CHICKEN WINGS**

**LEMON PEPPER**



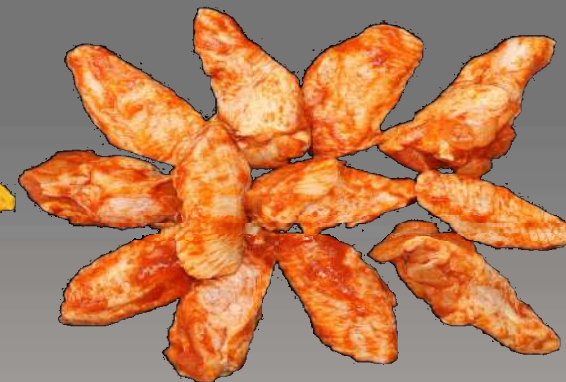
**SHISH TA WOOK**



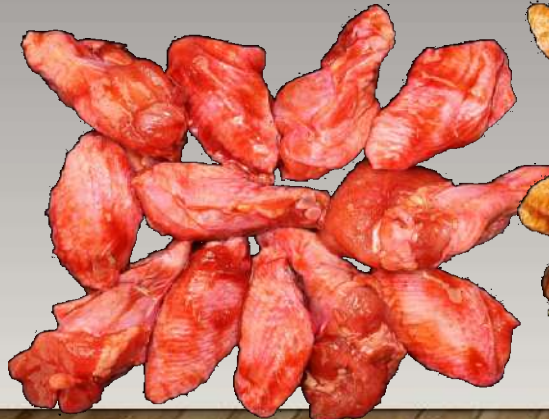
**GARLIC BUTTER**



**MEXICAN CHILLY**



**CHINESE**



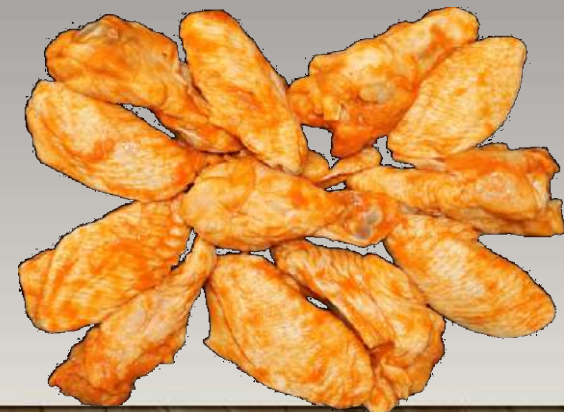
**BBQ**



**TIKKA MASALA**

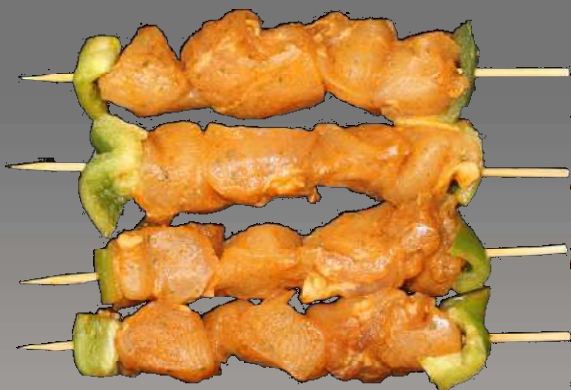


**SWEET & SOUR**

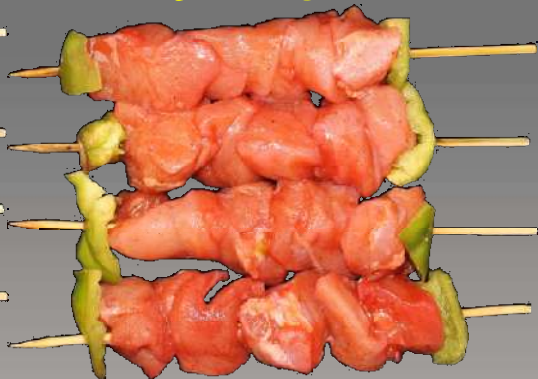


**CHICKEN COCKTAIL WINGS**

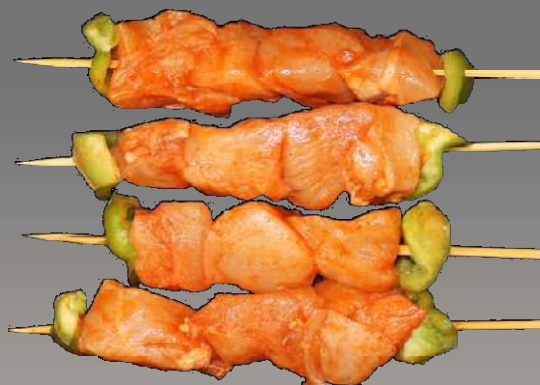
**TIKKA MASALA**



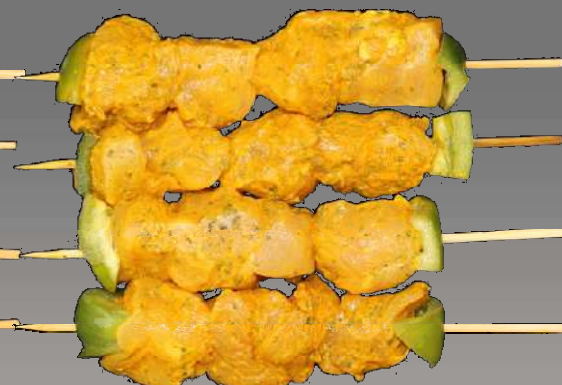
**CHINESE**



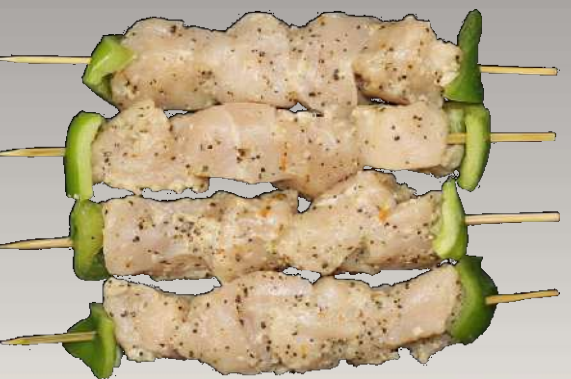
**SWEET & SOUR**



**GARLIC BUTTER**



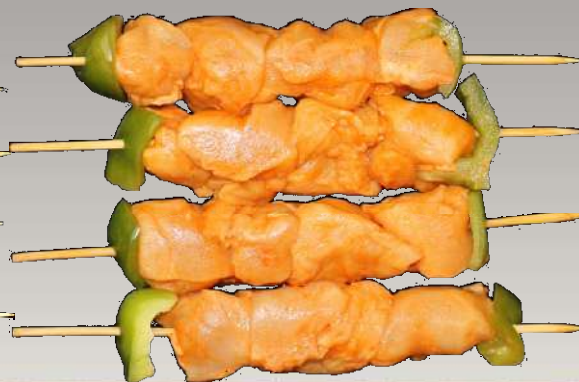
**LEMON PEPPER**



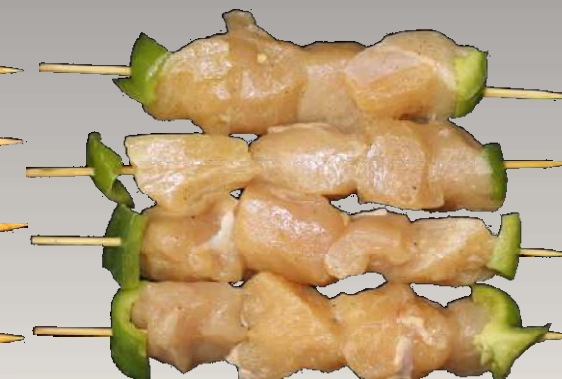
**BBQ**



**SWEET & SPICY**

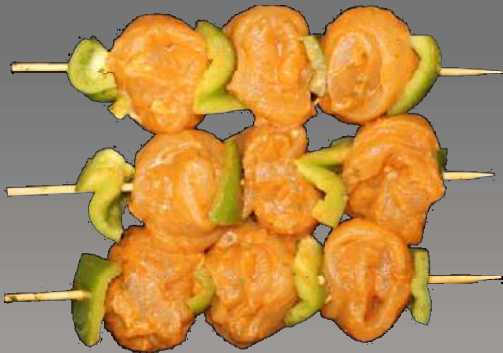


**SHISH TA'WOOK**



**CHICKEN SKEWERS**

**MEXICAN CHILLY**



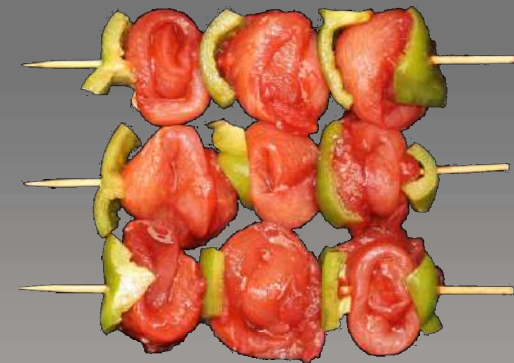
**GARLIC BUTTER**



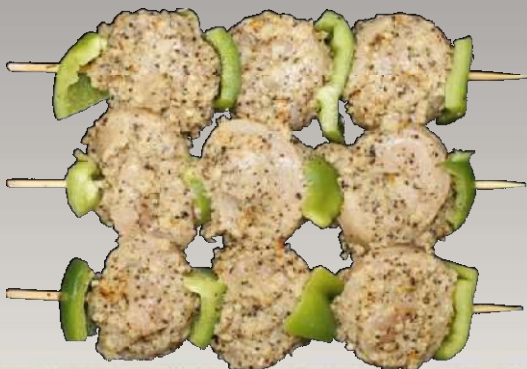
**BBQ**



**CHINESE**



**LEMON PEPPER**



**SHISH TAWOOK**



**TIKKA MASALA**

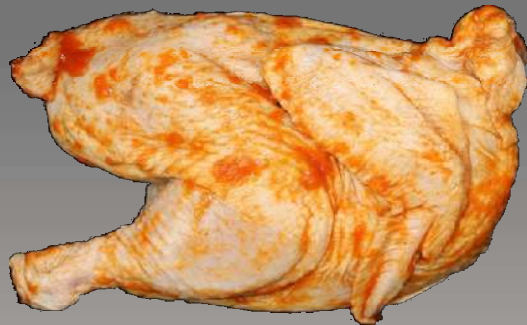


**CHICKEN PINWHEELS**

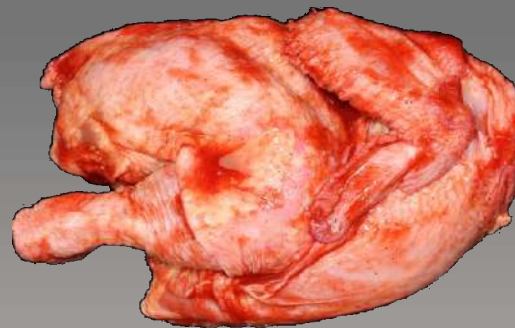
**LEMON PEPPER**



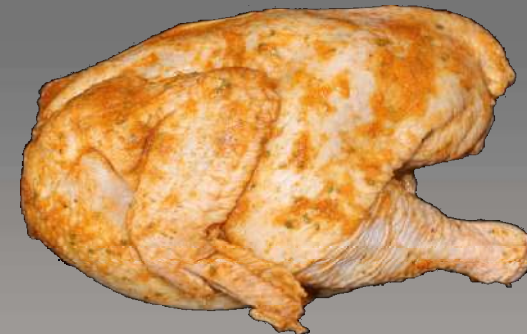
**SWEET & SOUR**



**CHINESE**



**TIKKA MASALA**



**GARLIC BUTTER**



**SHISH TAWOOK**



**BBQ**



**HALF CHICKEN**

***SWEET & SOUR***



***GARLIC BUTTER***



***LEMON PEPPER***



***SHISH TAWOOK***



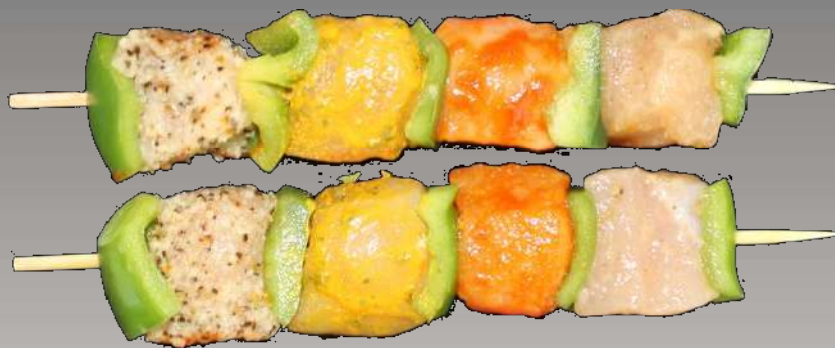
**Shelf Life: 3 days including Production & Expiry date**

***STUFFED CAPSICUM CHICKEN***

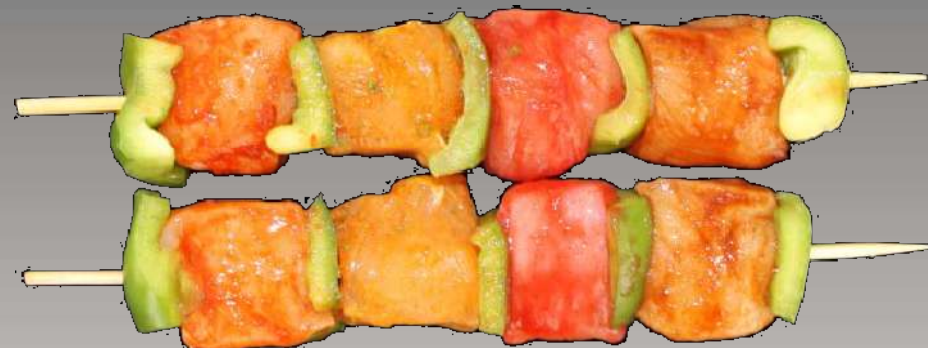


**Shelf Life: 3 days including Production & Expiry date**

***CHICKEN RAINBOW  
SKEWERS 1***



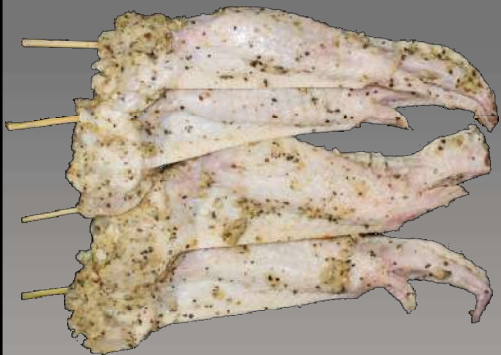
***CHICKEN RAINBOW  
SKEWERS 2***



**Shelf Life: 3 days including Production & Expiry date**

**CHICKEN SUNDOWNER**

**LEMON PEPPER**



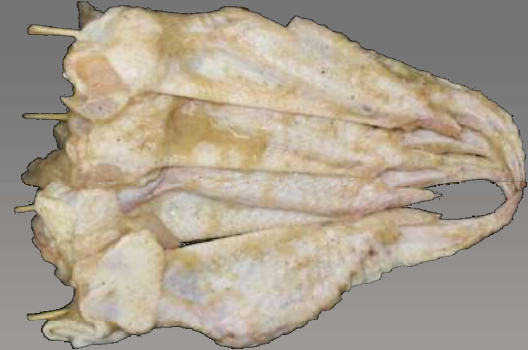
**TIKKA MASALA**



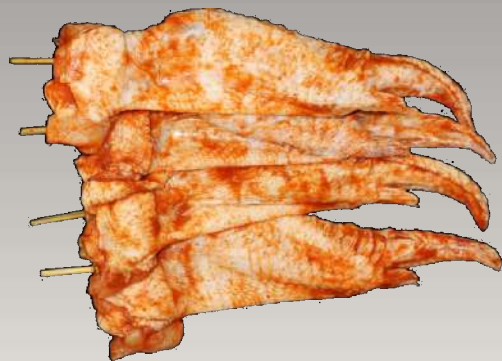
**GARLIC BUTTER**



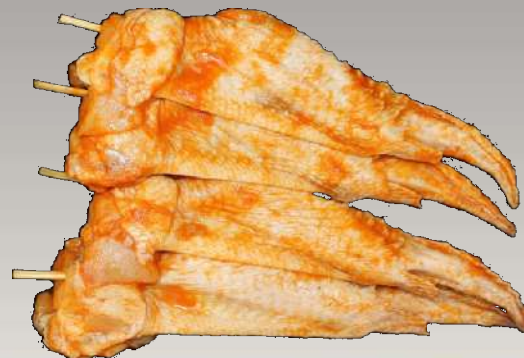
**SHISH TAWOOK**



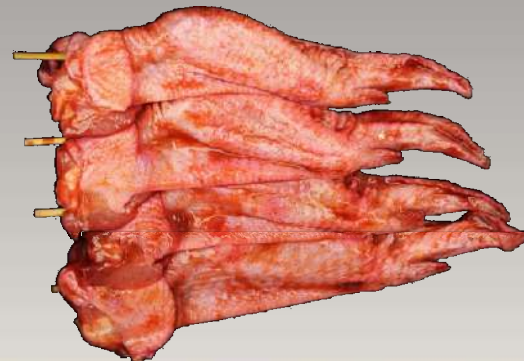
**MEX. CHILLY**



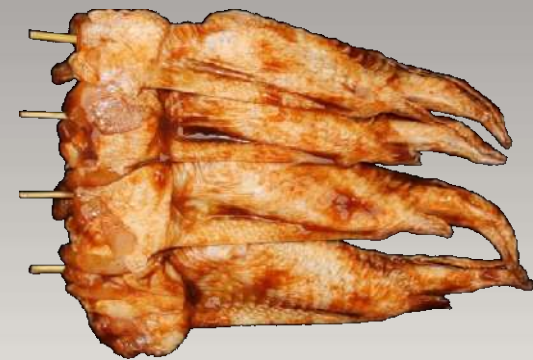
**SWEET & SOUR**



**CHINESE**



**BBQ**



**Shelf Life: 3 days including Production & Expiry date**

**CRUMBED CHICKEN  
BREAST SPICY**



**STUFFED  
CHICKEN  
BREAST**



**Shelf Life: 3 days including Production & Expiry date**

**GOURMENT CHICKEN  
LOLLIPOP MILD**

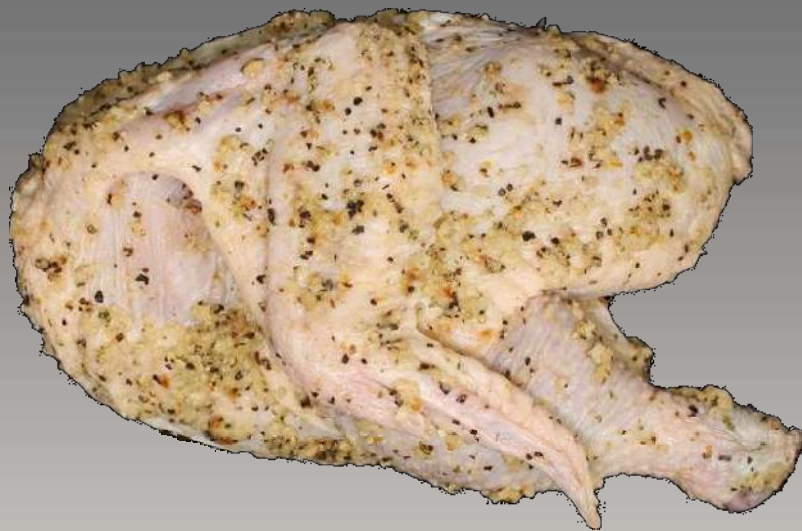


**GOURMENT CHICKEN  
LOLLIPOP SPICY**

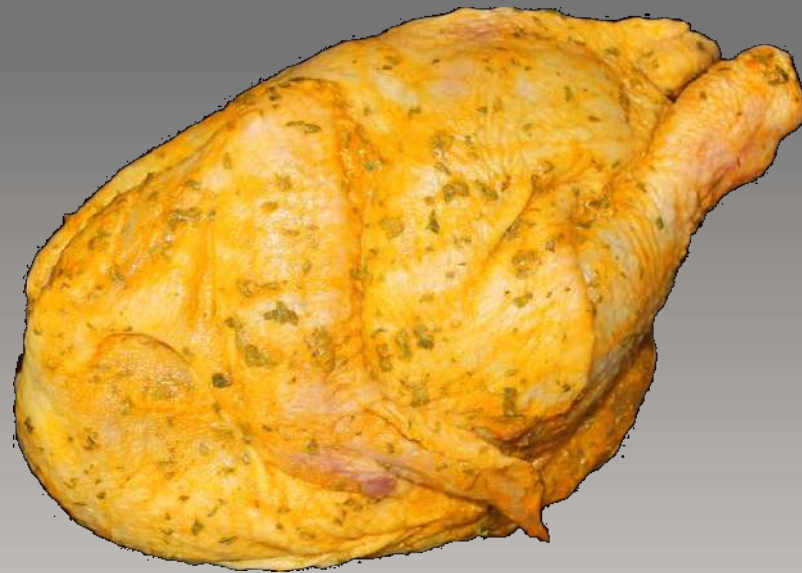


**Shelf Life: 3 days including Production & Expiry date**

# LIST OF MARINATED CHICKEN PRODUCTS



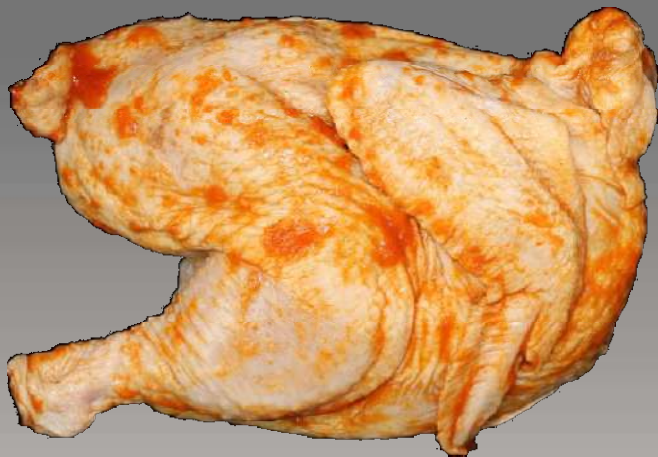
***CHICKEN SPATCH COCK –  
LEMON & HERBS***



***CHICKEN SPATCH COCK –  
GARLIC & HERBS***



# LIST OF MARINATED CHICKEN PRODUCTS



***CHICKEN SPATCH COCK –  
MEXICAN***



***CHICKEN CORDON BLEU***



# LIST OF MARINATED CHICKEN PRODUCTS



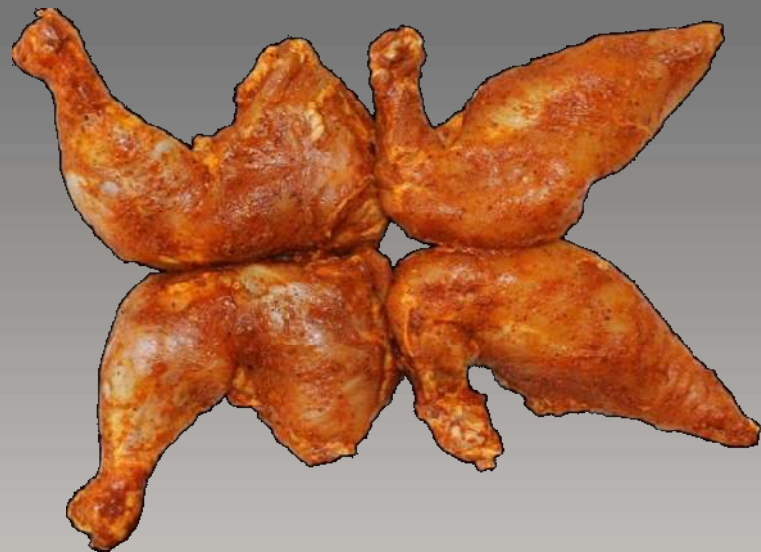
***SMOKY CHICKEN WHOLE***



***SMOKY CHICKEN BREAST***



# LIST OF MARINATED CHICKEN PRODUCTS



***CHICKEN WHOLE TANDOORI***



***STUFFED CHICKEN WHOLE***



# LIST OF MARINATED CHICKEN PRODUCTS



***CHICKEN ROULADE***



***CHICKEN CUTLETS***



# LIST OF MARINATED CHICKEN PRODUCTS



***CHICKEN CHEESE BALLS***



***TENDERISED CHICKEN BREAST***



# CRUMBED CHICKEN BREAST MILD



# CRUMBED CHICKEN BREAST SPICY



# LIST OF MARINATED CHICKEN PRODUCTS

**CHICKEN KOFTA**



**CAJUN CHICK LEG B/L**





**Chicken Drumstick – Hot & Spicy**



**Chicken wings - BBQ**

**Shelf Life: 3 days including Production & Expiry date**

HealthPlus



HealthPlus

**LAMB**

**From Red Meat Range**

**LAMB CUBES BONE LESS**



**Lamb Cubes B/L 15 – 20 grams per piece**



**Lamb Cubes B/L 30x30mm per piece**



**Lamb Shoulder Cubes B/L**

**Shelf Life: 3 days including Production & Expiry date**

**FROZEN LAMB RACK CHOPS – FRENCH CUT. ORIGIN - AUSTRALIA**



**LAMB RACK – FRENCH CUT, CAP ON, CHAIN ON, ORIGIN - AUSTRALIA**



**Shelf Life: 3 days including Production & Expiry date**

**FROZEN LAMB LOIN CHOPS – ORIGIN - AUSTRALIA**



**FROZEN LAMB RACK CHOPS – ORIGIN – AUSTRALIA,  
80 TO 90 GRAMS PER PIECE APPROX.**



**FROZEN LAMB SHOULDER CHOPS – ORIGIN – AUSTRALIA, 300 TO 400 GRAMS PER PIECE APPROX.**



**FROZEN LAMB CUBES – ORIGIN – AUSTRALIA,  
15 TO 20 GRAMS PER PIECE APPROX.**



**Bone-In Cubes**



**Boneless Cubes**



**LAMB MINCE**



**Lamb Mince – Leg B/L**



**Lamb Mince – shoulder B/L**

**Shelf Life: 3 days including Production & Expiry date**

**FROZEN MUTTON CUBES – ORIGIN – AUSTRALIA,  
15 TO 20 GRAMS PER PIECE APPROX.**



**Bone-In Cubes**

**Boneless Cubes**



**MEAT BALLS - 25 GRAMS**

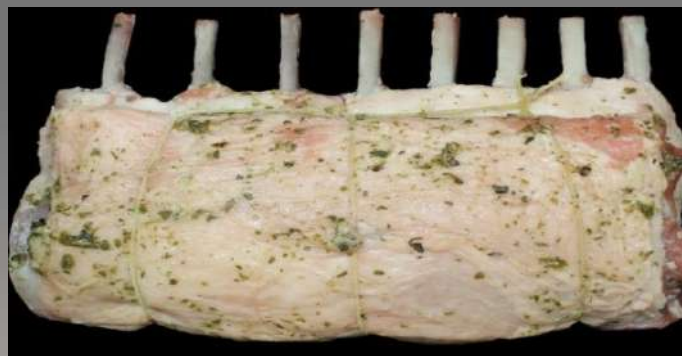


**Shelf Life: 3 days including Production & Expiry date**

***STUFFED LAMB SHOULDER B/L***



***STUFFED LAMB RACK - FRENCHED***



***MARINATED LAMB CHOPS***



***MARINATED LAMB STEAK***



***LAMB SHOULDER B/L NETTED  
MARINATED***



***LAMB LEG B/L NETTED MARINATED***



***FRENCHED LAMB RACK GARLIC ROSEMARY***



***FRENCHED LAMB RACK GARDEN MINT***



***CHILLED LAMB SATAY BBQ***



***STUFFED CAPSICUM LAMB***



## LAMB KOFTA



**LAMB SHANK  
MARINATED**



**LAMB FINGER  
MARINATED**



# GARDEN MINT LAMB CUBES



## ITALIAN HERB LAMB CUBES



# GARLIC & ROSEMARY LAMB CUBES



# LAMB KOFTA



Health Plus General Trading – Product Brochure  
Red Meat Range, Custom Made



# MOROCCAN LAMB CHOPS



# LAMB MERGUEZ



### LAMB HOT ARABIC



HealthPlus



HealthPlus

**BEEF**

**From Red Meat Range**

**BEEF MINCE**



3 mm Thickness, 15-17% fat

5mm Thickness



**Shelf Life: 3 days including Production & Expiry date**

**CHILLED BEEF CUBES – 15 TO 20 GRAMS PER PIECE**



**CHILLED BEEF CUBES – 1X1 INCH PER PIECE**



**FRESH BEEF JULIENE**



10 – 12 grams per piece approx.

12-15 grams per piece approx.



**BEEF MEDALLION – 40 TO 50 GRAMS PER PIECE**



**Shelf Life: 3 days including Production & Expiry date**

**CHILLED BEEF STRIPLION STEAK – 250 TO 350  
GRAMS PER PIECE**



**Shelf Life: 3 days including Production & Expiry date**

**CHILLED BEEF RIB EYE STEAK –  
200 TO 250 GRAMS PER PIECE**



**Beef Rib Eye Steak - Australia**

**Beef Rib Eye Steak - Brazil**



**Shelf Life: 3 days including Production & Expiry date**

**CHILLED BEEF BURGER  
200/160/120G**



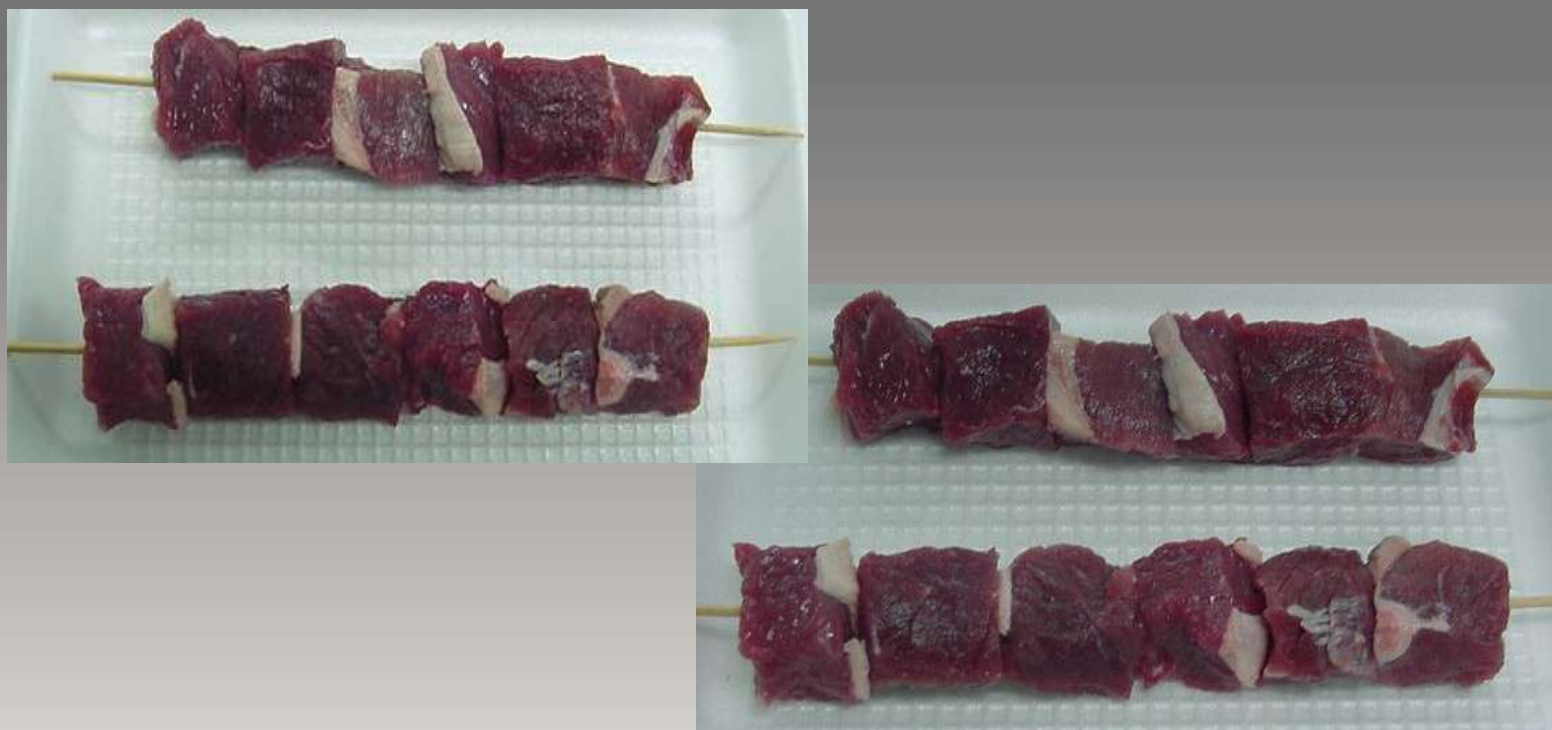
**Shelf Life: 3 days including Production & Expiry date**

**BEEF ROULADE – 130 TO 150 GRAMS PER PIECE**



**Shelf Life: 3 days including Production & Expiry date**

**BEEF SASHLICK – 18 TO 25 GRAMS PER PIECE**



**Shelf Life: 3 days including Production & Expiry date**

**FROZEN BEEF CUBES**



**Beef Cubes 30x30mm - Brazil**

**Beef Cubes 1.5x1.5 inches, India**



### CORNERED BEEF



### BEEF RIBS



**ANGUS BEEF BURGER**



**BRATWURST SAUSAGE**



***CHORIZO***



***SALT & PEPPER BEEF  
BILTONG SLICED***



***MARINATED BEEF SHORTRIBS***



***BREAKFAST BEEF SAUSAGE***



# SPICY BEEF BILTONG



**BEEF PINWHEELS**

**BBQ**



**GARLIC & HERBS**



***BEEF SASHLIK***



***BEEF SKEWERS - ESPETADA***



***BEEF SKEWERS - BBQ***



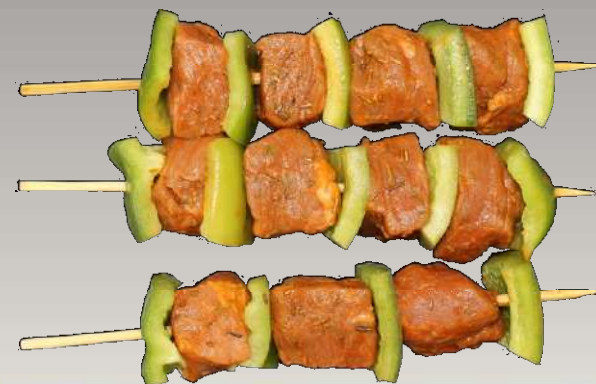
***BEEF CALDERETA***



***STUFFED CAPSICUM - BEEF***



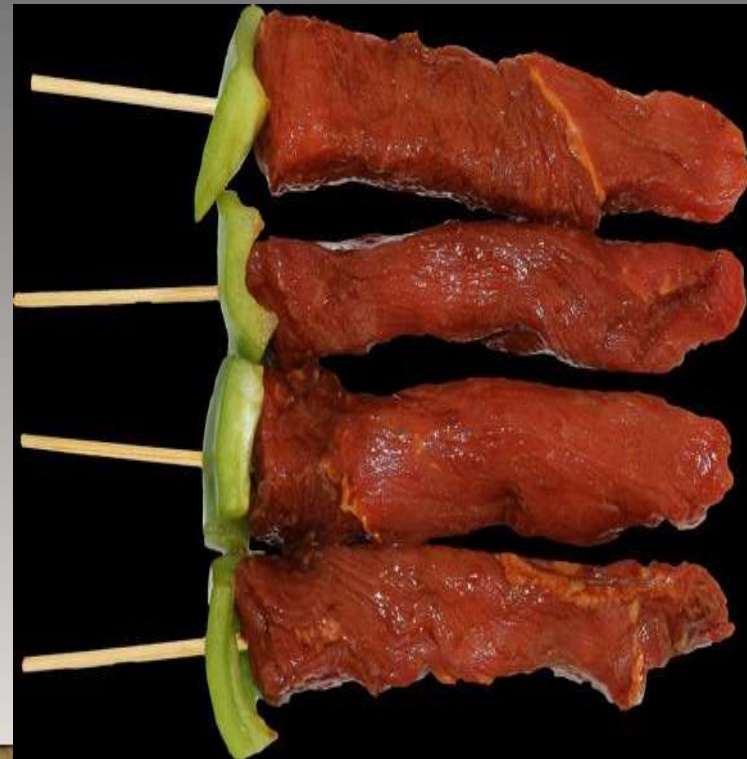
***BEEF SKEWERS - ROSEMARY GARLIC***



***HOT ARABIC BEEF SAUSAGE***



***BEEF SATAY - BBQ***



***PEPPER BEEF BURGER  
100GR***



***CHEESE BEEF BURGER  
100GR***

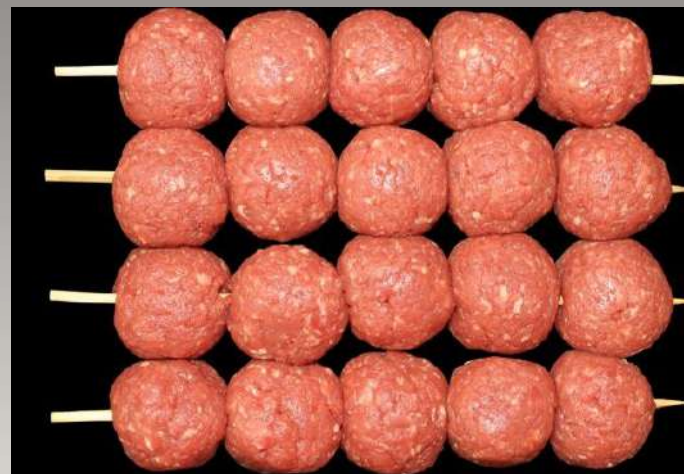


# Health Plus General Trading – Product Brochure Red Meat Range

***SESAME BEEF BURGER 100GR***



***BEEF MEAT BALLS***



## CAJUN BEEF FAJITHA



## SMOKEY BBQ BEEF FAJITHA



# THAI BEEF STEAK



# PEPPER BEEF STEAK



# LABANESE BEEF SAUSAGE



# MERGUEZ BEEF SAUSAGE



## BOEREWORS BEEF SAUSAGE



# TOULOUSE SAUSAGE



HealthPlus



HealthPlus

**SPECIALITY ITEMS**

**VEAL ESCLOPS - 120 TO 140 GRAMS PER PIECE**



**Shelf Life: 3 days including Production & Expiry date**

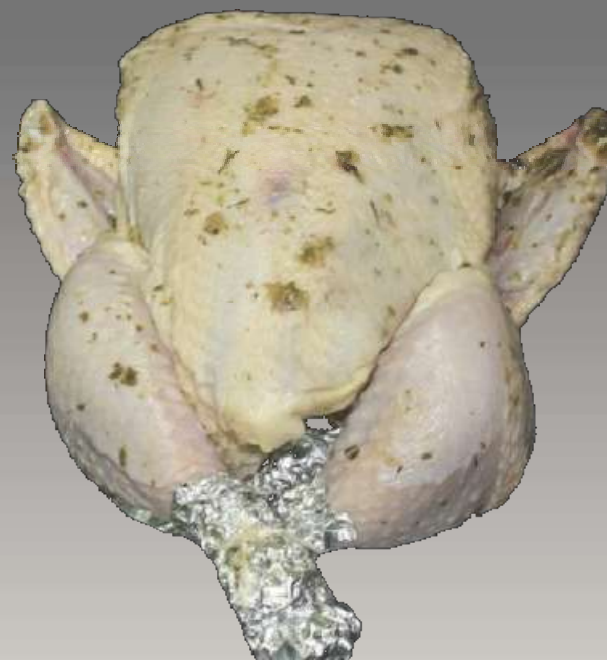
## *LABANESE VEAL SAUSAGE*



## LIST OF SPECIALITY PRODUCTS



***TURKEY CORDON BLEU***



***STUFFED TURKEY WHOLE***

## LIST OF SPECIALITY PRODUCTS



***TURKEY CHEESE BALLS***



***TURKEY BURGER***

## LIST OF SPECIALITY PRODUCTS



***TURKEY ROULADE***



***STUFFED TURKEY BREAST***

## LIST OF SPECIALITY PRODUCTS



***TURKEY CUTLETS***



***STUFFED DUCK***

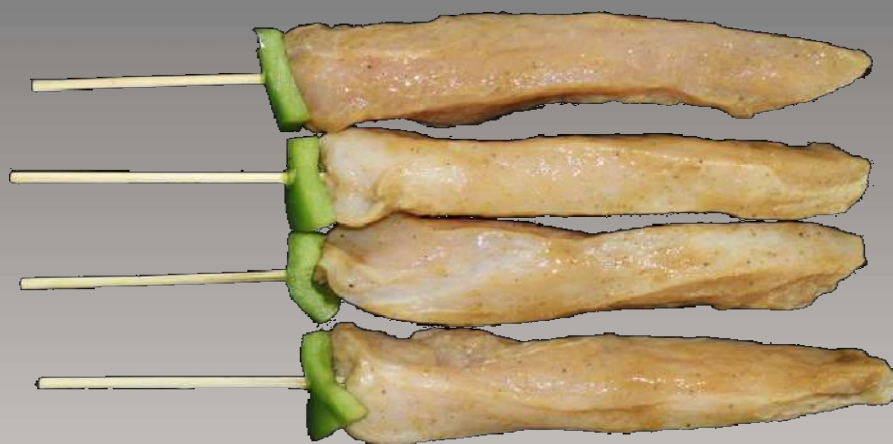
**CHILLED TURKEY ESCLOPS – 125 TO 175 GRAMS**



**Shelf Life: 3 days including Production & Expiry date**

# SPECIALITY ITEMS

*TURKEY SATAY - CREAMY GARLIC*



*TURKEY SKEWERS - HOT & SPICY*



# SPECIALITY ITEMS

***MARINATED QUAILS - LEMON PEPPER***



***MARINATED QUAILS - HOT & SPICY***



# SPECIALITY ITEMS

***MARINATED RABBIT***



***MARINATED VENNISON***



***MARINATED OSTRICH  
IN OVENABLE BAG***



# SPECIALITY ITEMS

***CAMEL MEAT BURGER***



***CAMEL KOFTA***



***READY TO COOK KIBBEH***

